

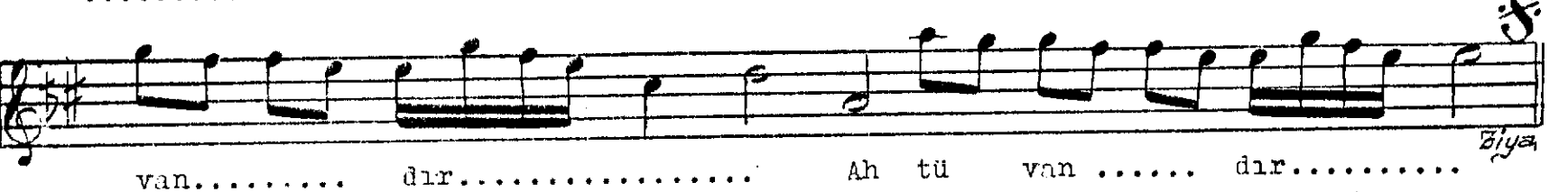
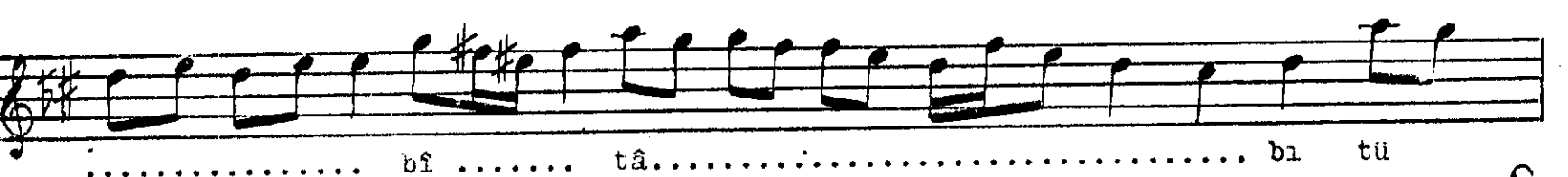
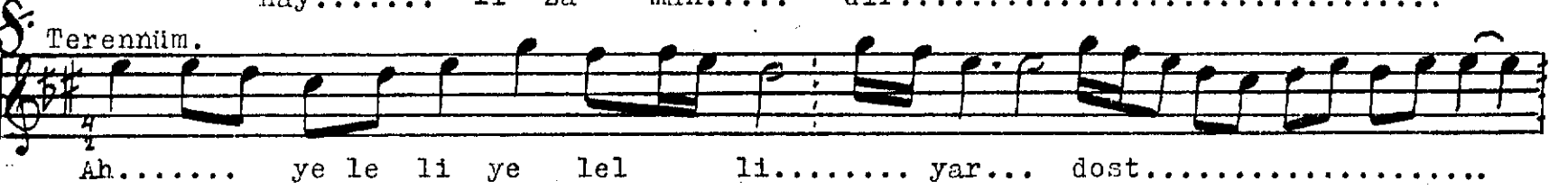
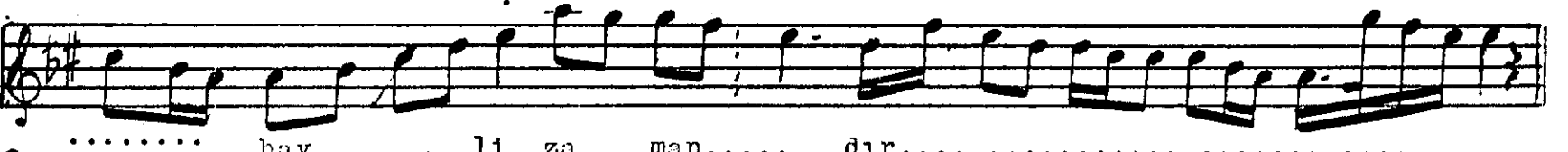
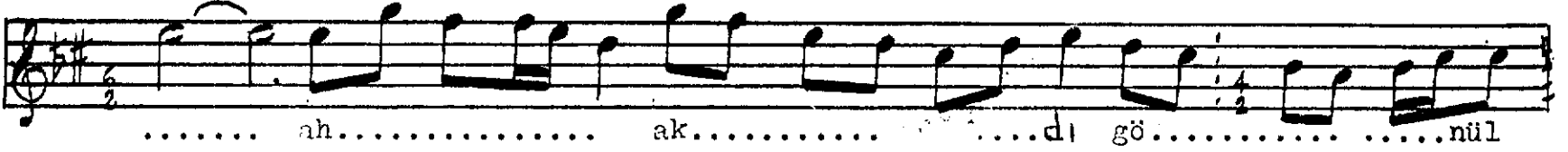
Usûl: REMEL

HİCAZ BESTE

Söz : DÜRDANE ALTAN
Mûzik: Dr. İSMET DOĞRU

(Bir muğ beçeye akdî gönül)

(♩=80)



Bir muğ beçeye akdî gönül-haylı zamandır,
Nazende edâ mest nîgeh-i afet-i candır.
Dildâdeleri reşk ile bitâb-ü tûvandır,
Nazende edâ mest nîgeh-i afet-i candır.